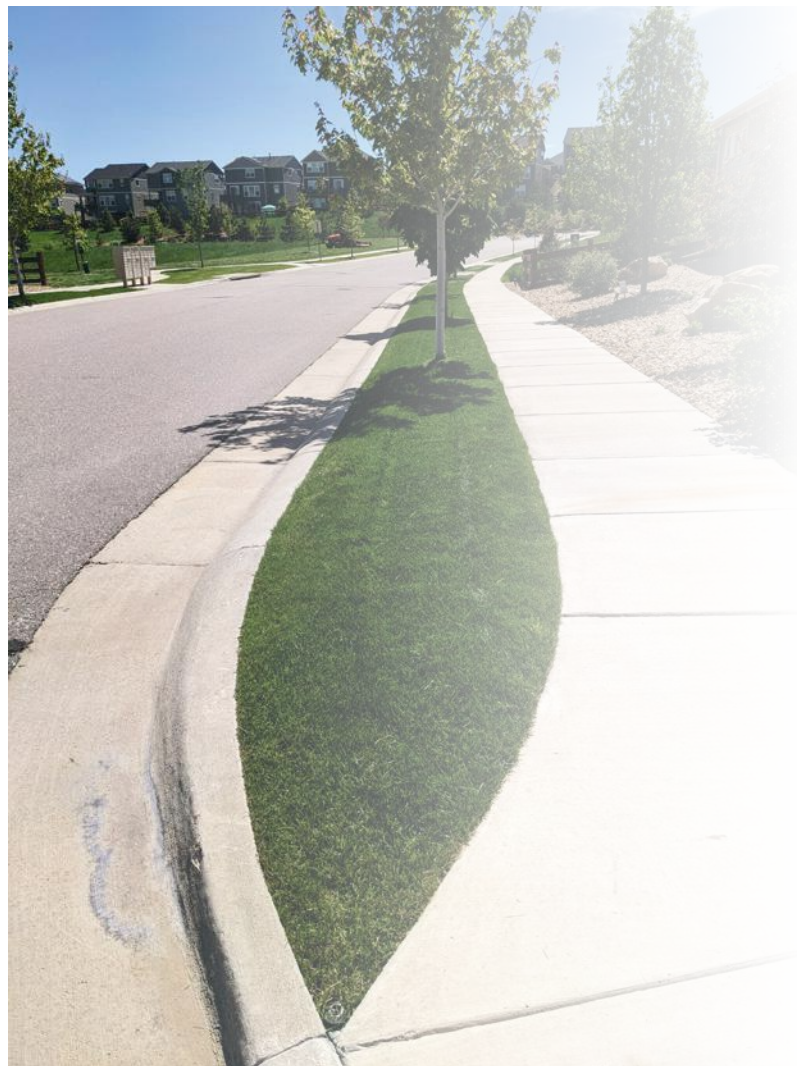


# Sierra Ridge Metropolitan District

Water Wise Garden Guide for Native and Naturalized Plant Palettes to Reduce Water Consumption and Fertilizer Input in Tree Lawns with the Goal of Creating Climate Resilient Landscapes and to Provide Pollinator Habitat.



Sierra Ridge Metropolitan District  
Douglas County, Colorado, United States



Existing



Proposed

Prepared by:



Summer Sun  
 Illustrative Rendering.....3  
 Layout and Schedule.....4  
 Plant Palette Images.....5

Fall Fiesta  
 Illustrative Rendering.....6  
 Layout and Schedule.....7  
 Plant Palette Images.....8

Pollinator Garden  
 Illustrative Rendering.....9  
 Layout and Schedule.....10  
 Plant Palette Images.....11

High Plains Desert  
 Illustrative Rendering.....12  
 Layout and Schedule.....13  
 Plant Palette Images.....14

Cool Breeze  
 Illustrative Rendering.....15  
 Layout and Schedule.....16  
 Plant Palette Images.....17

Summer Shade  
 Illustrative Rendering.....18  
 Layout and Schedule.....19  
 Plant Palette Images.....20

Planting Specifications  
 Details and Irrigation Diagram....21

Landscape Material Specifications  
 Mulch.....22  
 Boulders.....23  
 Edging.....24

- The following document has been prepared by LEAF Design Works for the Sierra Ridge Metropolitan District and its Residents.
- The guidelines reflect what is known as industry leading best practices at the time of creation of this document.
- The six water wise garden templates serve as a guide to convert the street facing tree lawns into low water use planting beds and will need to be adjusted to avoid any infrastructure or obstacles, ex: hydrants, utility lines and covers, trench drains, street signs, etc. Existing trees may not be removed.
- The planting is laid out with a modular approach. Where a full module cannot be used, adjust plant counts accordingly (ex: when adjacent neighboring turf remains).
- The replacement of turfgrass in the tree lawn with plants is encouraged, mulch is intended solely as a ground cover material between plants. As plants mature less mulch will be needed.
- Plant and material selections are tailored to Colorado’s Front Range in terms of local availability, climate resilience, water preservation and sustainability.
- Drawings and designs are intellectual property of LEAF Design Works with print release given to Sierra Ridge Metropolitan District.
- Call before you dig 811.  
It is free, it is easy and it is the law.
- Consult all applicable codes prior to beginning work to ensure compliance with all zoning, traffic, safety, fire, and building code. Note: No planting or landscaping may be higher than 24 inches if within a sight triangle. This applies to homes on a corner lot.
- The district may attach additional guidelines from time to time as required by Douglas County.
- For questions, contact your management company.





# Illustrative Garden Rendering

## Example Garden: Summer Sun



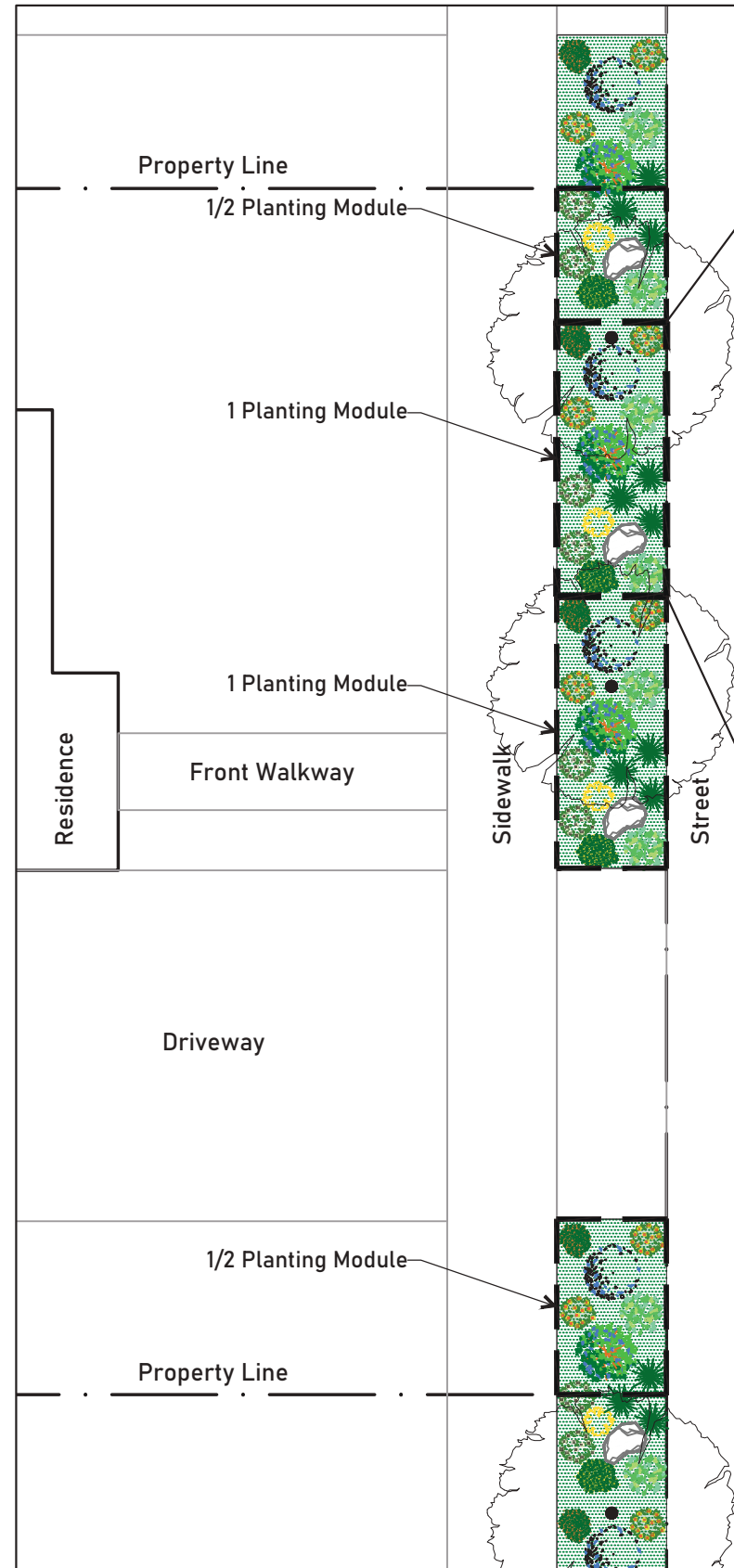
Note: Example rendering shows plants at mature size and spread, which is typically achieved 3-5 years after planting.



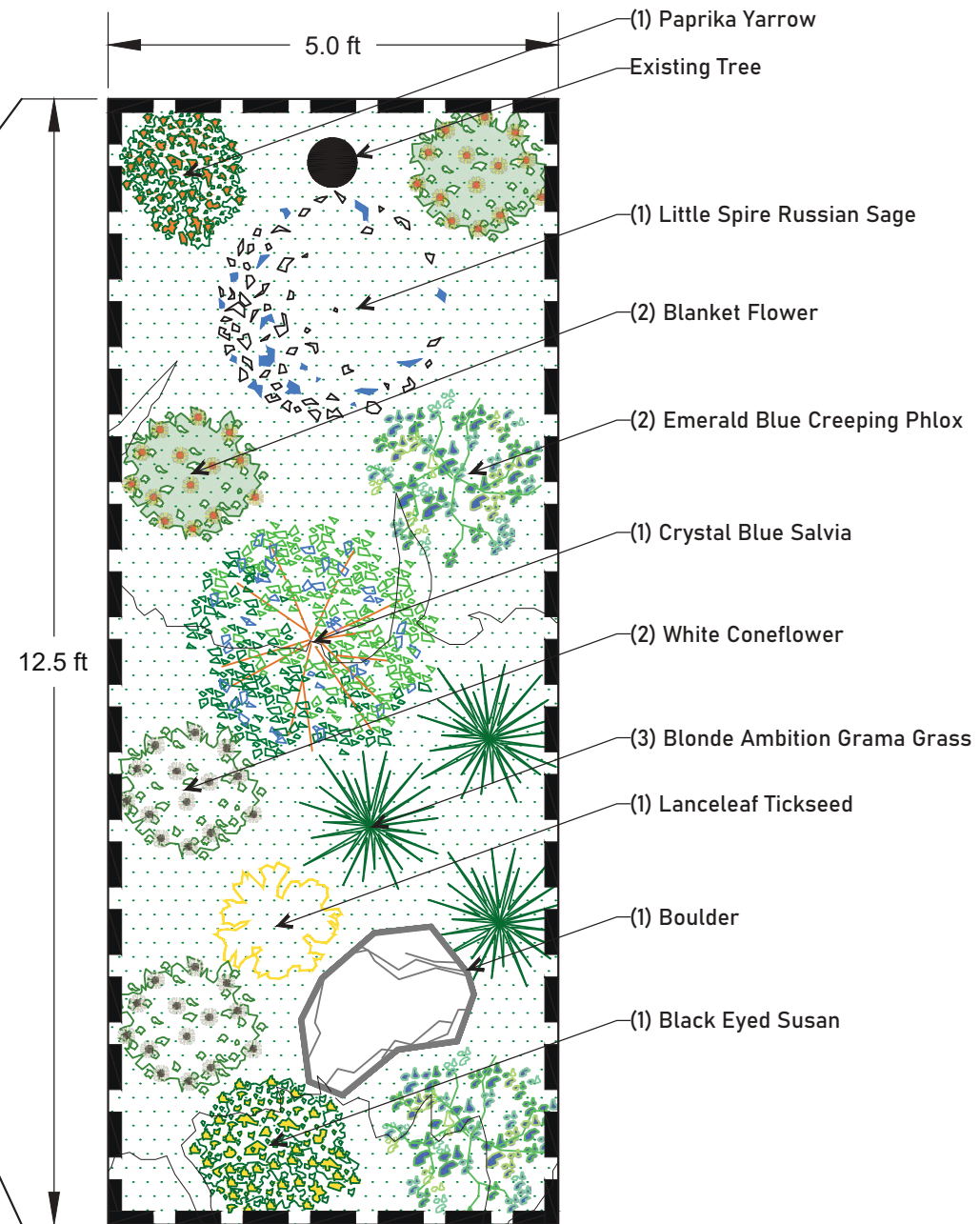
# Summer Sun

# Summer Sun

Full Sun


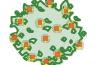









Scale: 1/8" = 1 ft



Scale: 1/2" = 1 ft

## PLANT LEGEND

-  Black Eyed Susan
-  Blanket Flower
-  Blonde Ambition Grama Grass
-  Crystal Blue Salvia
-  Emerald Blue Creeping Phlox
-  Lanceleaf Tickseed
-  Little Spire Russian Sage
-  Paprika Yarrow
-  White Coneflower

- Native and adapted plants that thrive in the Colorado heat will make for a colorful display during the summer months.
- Low water use is front and center of this plant design. Once the plants are established only very limited waterings are necessary to keep these plants thriving.
- Plants of this palette attract pollinators and provide habitat for small insects.
- Add in a rock or two for less maintenance, as well as added interest during the cold half of the year - think of a tall, tan grass next to a snowcapped boulder.

Common Name	Scientific Name	Water Demand	Exposure	Install Size	Mature Size (Height x Spread)	Bloom Color	Bloom Time	Native
Black Eyed Susan	<i>Rudbeckia fulgida 'Goldsturm'</i>	Low	Full Sun	#1	18"x18"	Golden Yellow	Mid Summer	
Blanket Flower	<i>Gaillardia aristata</i>	Low	Full Sun	#1	18"x18"	Yellow/Red	Mid Summer	•
Blonde Ambition Grama Grass	<i>Bouteloua gracilis 'Blonde Ambition'</i>	Very Low	Full Sun	#1	30"x18"	Blonde	Summer to Fall	•
Crystal Blue Salvia	<i>Salvia nemorosa 'Crystal Blue'</i>	Low-Med	Full Sun	#1	18"x30"	Blue	Late Spring to Early Summer	
Emerald Blue Creeping Phlox	<i>Phlox subulata 'Emerald Cushion Blue'</i>	Low	Full Sun	4" Pot	6"x24"	Blue	Early Spring	
Lanceleaf Tickseed	<i>Coreopsis lanceolata</i>	Low	Full Sun	#1	18"x18"	Yellow	Early to Mid Summer	•
Little Spire Russian Sage	<i>Perovskia atriplicifolia 'Little Spire'</i>	Very Low	Full Sun	#1	30"x30"	Purple-Blue	Mid to Late Summer	
Paprika Yarrow	<i>Achillea millefolium 'Paprika'</i>	Low	Full Sun	#1	18"x18"	Brick Red/Yellow	Early to Late Summer	•
White Coneflower	<i>Echinacea purpurea 'PowWow' White</i>	Low	Full Sun	#1	30"x18"	White	Mid to Late Summer	•

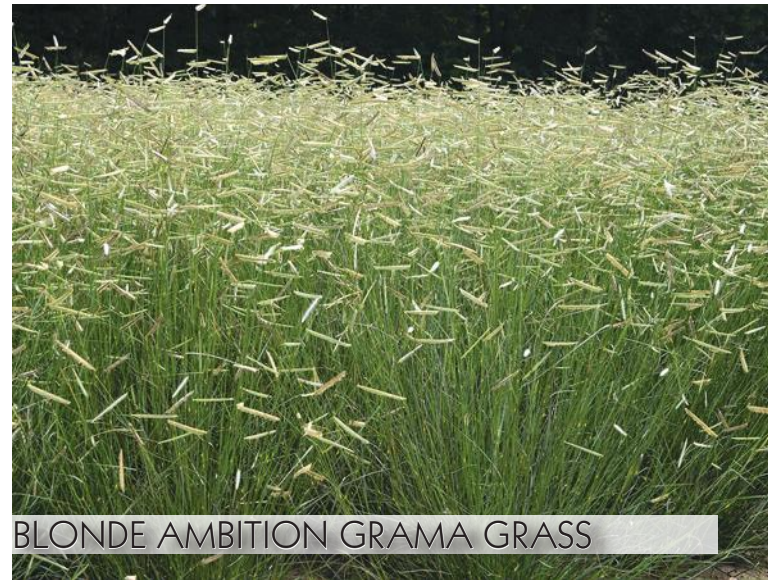


Summer Sun

Full Sun



BLANKET FLOWER



BLONDE AMBITION GRAMA GRASS



BLACK EYED SUSAN



CRYSTAL BLUE SALVIA



WHITE CONEFLOWER



LITTLE SPIRE RUSSIAN SAGE



LANCELEAF TICKSEED



EMERALD BLUE CREEPING PHLOX



PAPRIKA YARROW



# Illustrative Garden Rendering

## Example Garden: Fall Fiesta



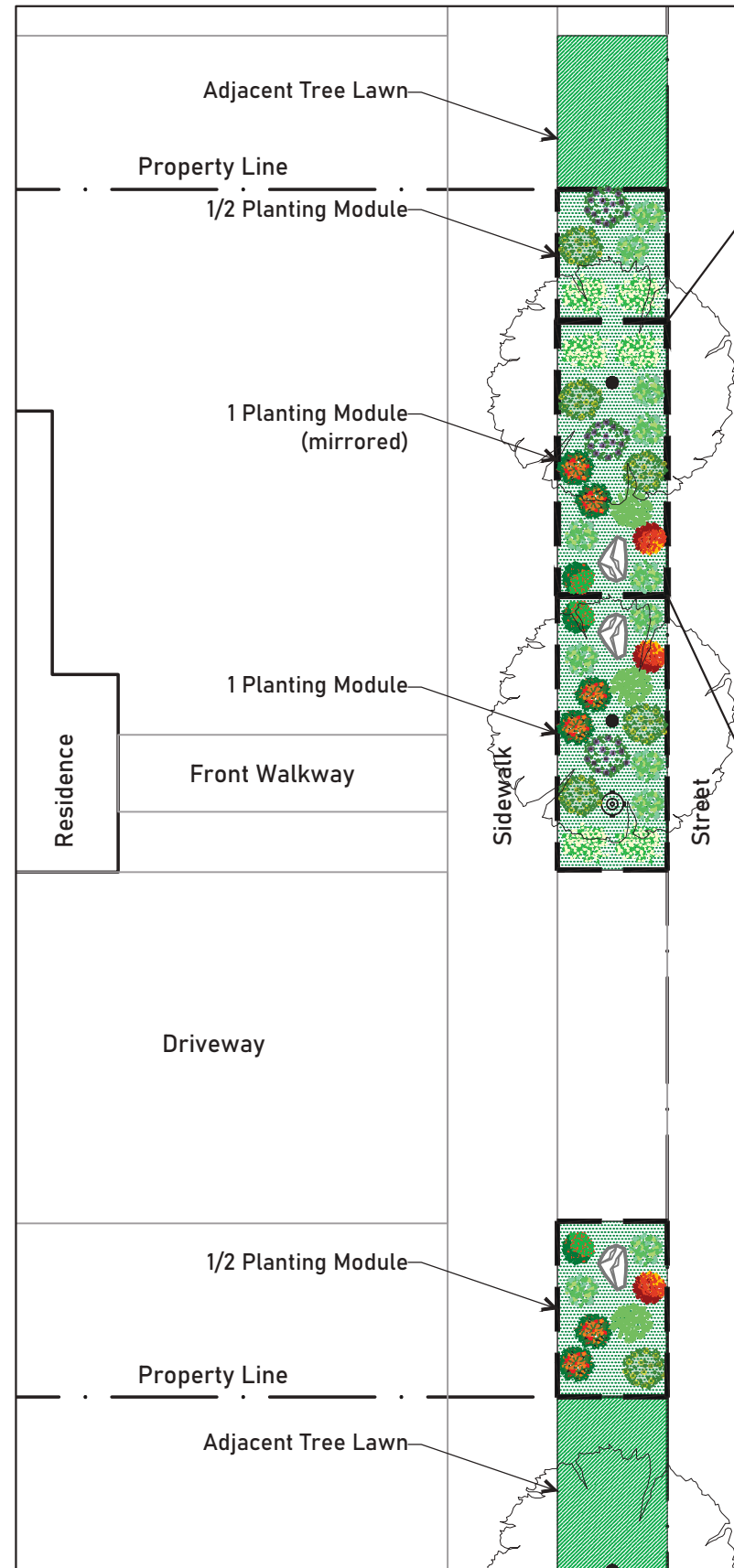
Note: Example rendering shows plants at mature size and spread, which is typically achieved 3-5 years after planting.



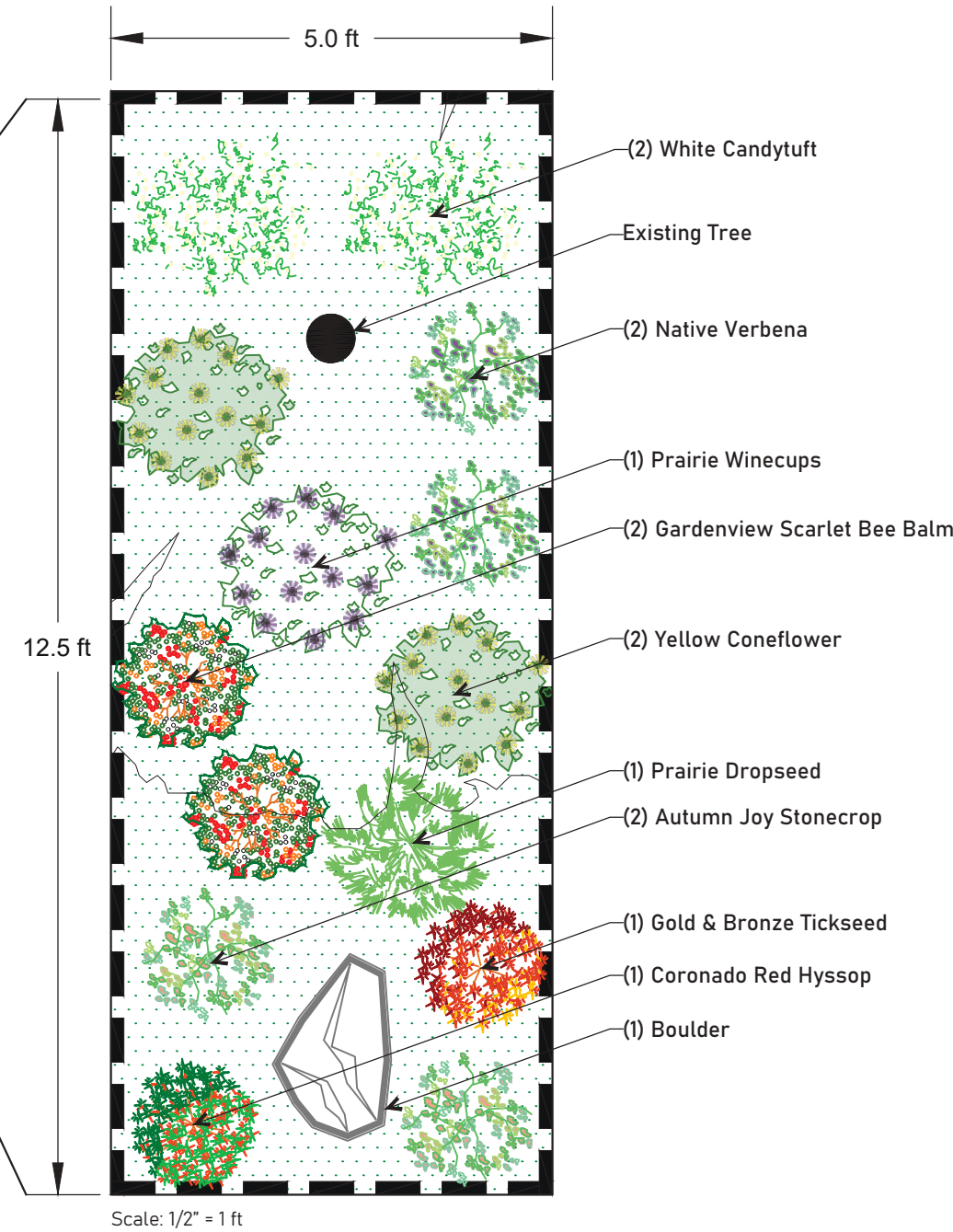
# Fall Fiesta

# Fall Fiesta

Full Sun




Scale: 1/8" = 1 ft



Scale: 1/2" = 1 ft

## PLANT LEGEND

-  Autumn Joy Stonecrop
-  Coronado Red Hyssop
-  Gardenview Scarlet Bee Balm
-  Gold & Bronze Tickseed
-  Native Verbena
-  Prairie Dropseed
-  Prairie Winecups
-  White Candytuft
-  Yellow Coneflower

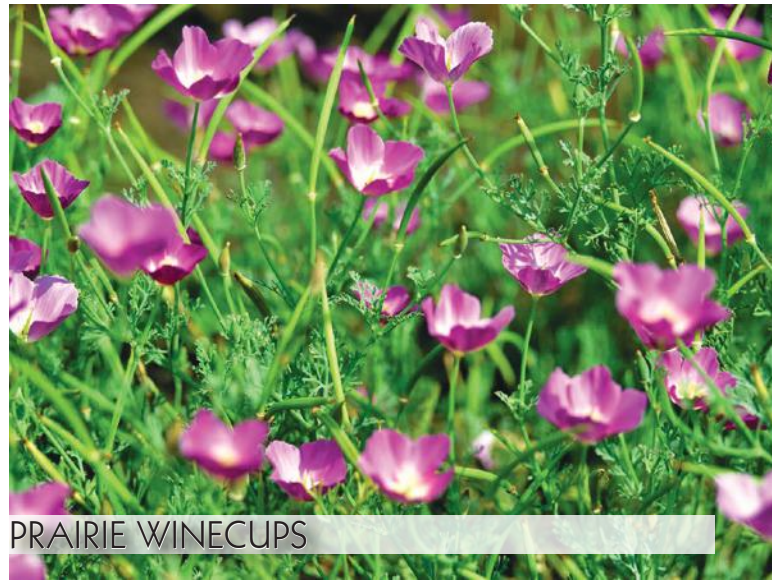
- Focusing on the second half of the summer and the fall, this design highlights the yellows, oranges and reds as well as the golds, tans and browns for a warm and bright celebration of late-summer.
- Layering of plants provides variation of heights to give more depth to the landscape.
- Another low water use design focusing on the ever growing need to preserve water, while still wanting a lush and colorful range of plants.
- Boulders can be incorporated to add more interest and character, but also to further reduce maintenance needs.

Common Name	Scientific Name	Water Demand	Exposure	Install Size	Mature Size (Height x Spread)	Bloom Color	Bloom Time	Native
Autumn Joy Stonecrop	<i>Sedum 'Autumn Joy'</i>	Low	Full Sun	#1	18"x15"	Salmon-Pink	Late Summer to Fall	
Coronado Red Hyssop	<i>Agastache aurantiaca 'Pstessene'</i>	Low	Full Sun	#1	18"x15"	Red	Mid Summer to Fall	
Gardenview Scarlet Bee Balm	<i>Monarda 'Gardenview Scarlet'</i>	Low-Med	Full Sun	#1	30"x18"	Scarlet	Mid Summer	
Gold & Bronze Tickseed	<i>Coreopsis 'Uptick'</i>	Low-Med	Full Sun	#1	18"x18"	Golden Yellow/Bronze	Summer to Fall	
Native Verbena	<i>Verbena bipinnatifida</i>	Low	Full Sun	4" Pot	6"x15"	Purple	Spring and Fall	•
Prairie Dropseed	<i>Sporobolus heterolepis</i>	Low	Full Sun	#1	24"x24"	Tan	Summer to Fall	•
Prairie Winecups	<i>Callirhoe involucrata</i>	Low	Full Sun	#1	9"x30"	Magenta	Early Summer to Fall	•
White Candytuft	<i>Iberis sempervirens</i>	Low	Full Sun	#1	9"x24"	White	Late Spring to Early Summer	
Yellow Coneflower	<i>Ratibida pinnata</i>	Very Low	Full Sun	#1	24"x24"	Yellow	Early to Late Summer	•



Fall Fiesta

Full Sun



PRAIRIE WINECUPS



YELLOW CONEFLOWER



GARDENVIEW SCARLET BEE BALM



GOLD & BRONZE TICKSEED



PRAIRIE DROPSEED



WHITE CANDYTUFT



AUTUMN JOY STONECROP



CORONADO RED HYSSOP



NATIVE VERBENA



# Illustrative Garden Rendering

## Example Garden: Pollinator Paradise



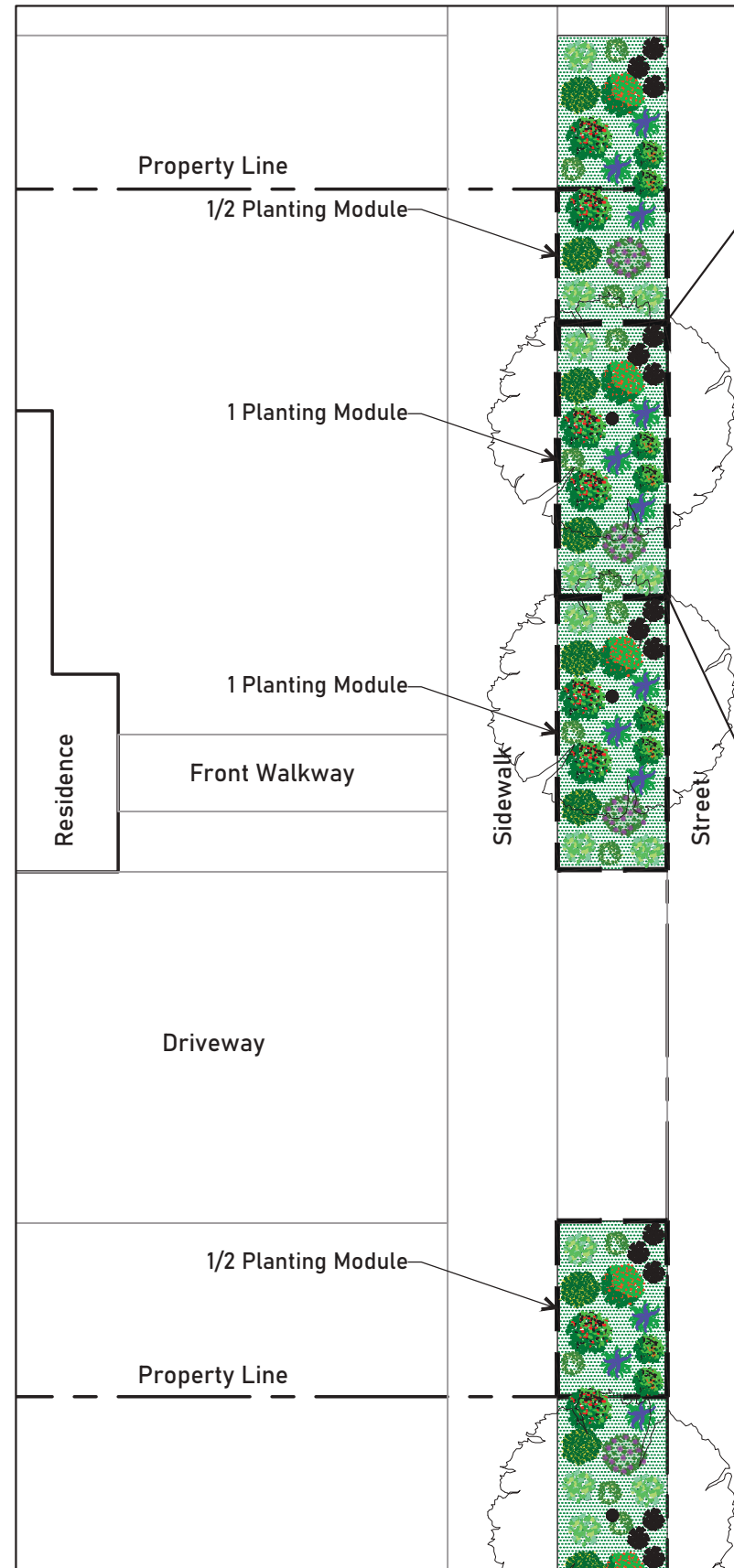
Note: Example rendering shows plants at mature size and spread, which is typically achieved 3-5 years after planting.



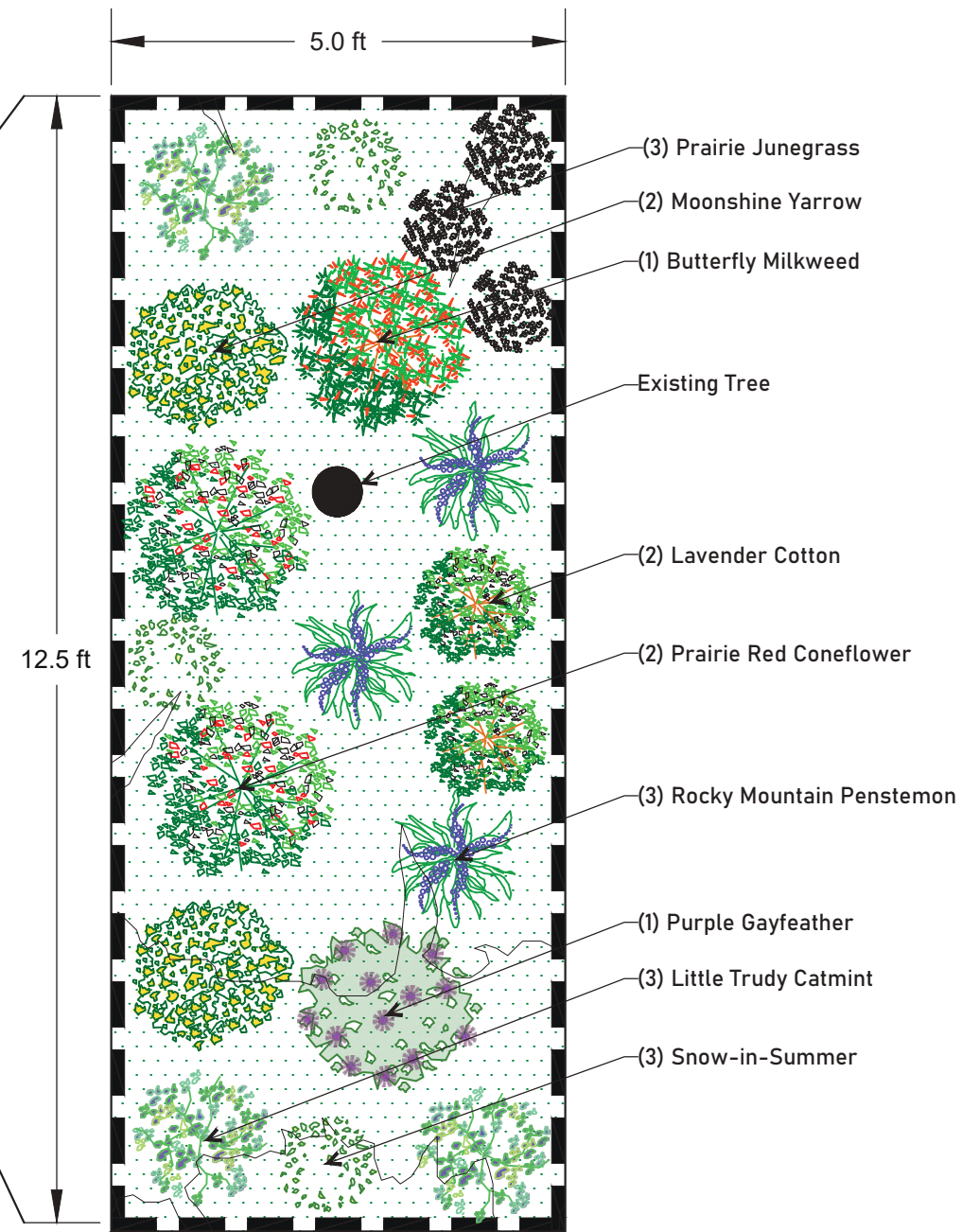
# Pollinator Paradise

# Pollinator Paradise

Full Sun






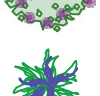
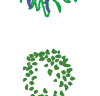



Scale: 1/8" = 1 ft



Scale: 1/2" = 1 ft

## PLANT LEGEND

-  Butterfly Milkweed
-  Lavender Cotton
-  Little Trudy Catmint
-  Prairie Red Coneflower
-  Moonshine Yarrow
-  Prairie Junegrass
-  Purple Gayfeather
-  Rocky Mountain Penstemon
-  Snow-In-Summer

- This plant design is centered around providing habitat for pollinators. Long flowering plants in a variety of bloom colors are the core of this mostly native mix.
- Varying heights and growth habits of the selected plants help create a diverse landscape, for both habitat and visual interest.
- A number of plants flower purple, a color known to attract bees.
- Low water use aligns with the vision for this project to not only reduce the number of waterings but also the amount per each round of irrigation.

Common Name	Scientific Name	Water Demand	Exposure	Install Size	Mature Size (Height x Spread)	Bloom Color	Bloom Time	Native
Butterfly Milkweed	<i>Asclepias tuberosa</i>	Low	Full Sun	#1	30"x24"	Orange	Mid to Late Summer	●
Lavender Cotton	<i>Santolina chamaecyparissus</i>	Low	Full Sun	#1	15"x15"	Yellow	Mid Summer	
Little Trudy Catmint	<i>Nepeta x 'Little Trudy'</i>	Low	Full Sun	#1	12"x18"	Lavender	Early to Late Summer	
Prairie Red Coneflower	<i>Ratibida columnifera pulcherrima</i>	Low	Full Sun	#1	18"x24"	Yellow/Red	Early to Late Summer	●
Moonshine Yarrow	<i>Achillea 'Moonshine'</i>	Low	Full Sun	#1	24"x18"	Light Yellow	Early to Late Summer	
Prairie Junegrass	<i>Koeleria macrantha</i>	Low-Med	Full Sun	#1	18"x12"	Purplish-Green	Early Summer	●
Purple Gayfeather	<i>Liatris spicata 'Floristan Violet'</i>	Low	Full Sun	#1	30"x24"	Violet-Purple	Early to Mid Summer	●
Rocky Mountain Penstemon	<i>Penstemon strictus</i>	Low	Full Sun	#1	18"x15"	Blue	Early to Mid Summer	●
Snow-In-Summer	<i>Cerastium tomentosum</i>	Low	Full Sun	4" Pot	9"x15"	White	Late Spring to Early Summer	



# Pollinator Paradise

Full Sun



BUTTERFLY MILKWEED



SNOW-IN-SUMMER



PRAIRIE JUNEGRASS



PURPLE GAYFEATHER



LAVENDER COTTON



LITTLE TRUDY CATMINT



MOONSHINE YARROW



ROCKY MOUNTAIN PENSTEMON



PRAIRIE RED CONEFLOWER



# Illustrative Garden Rendering

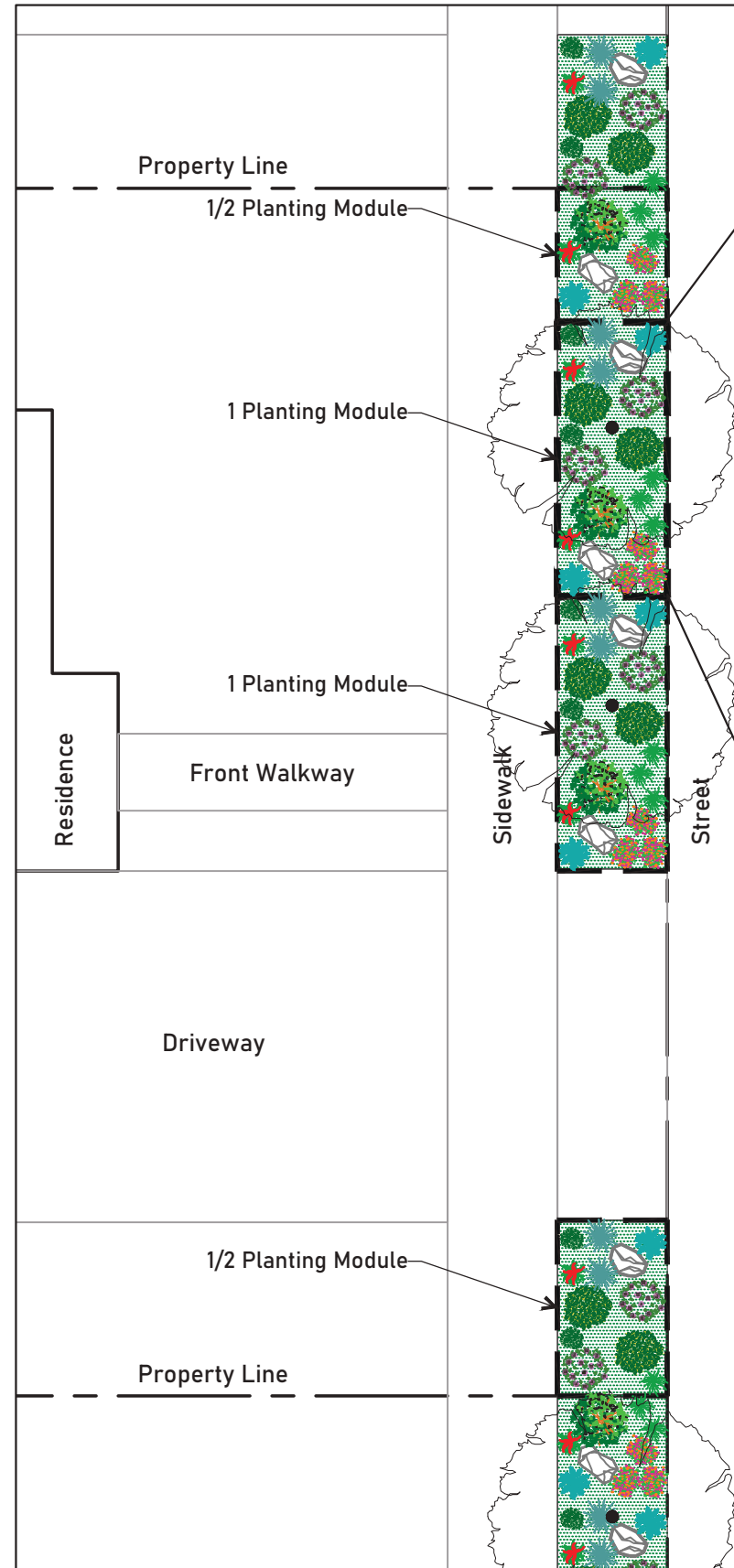
## Example Garden: High Plains Desert



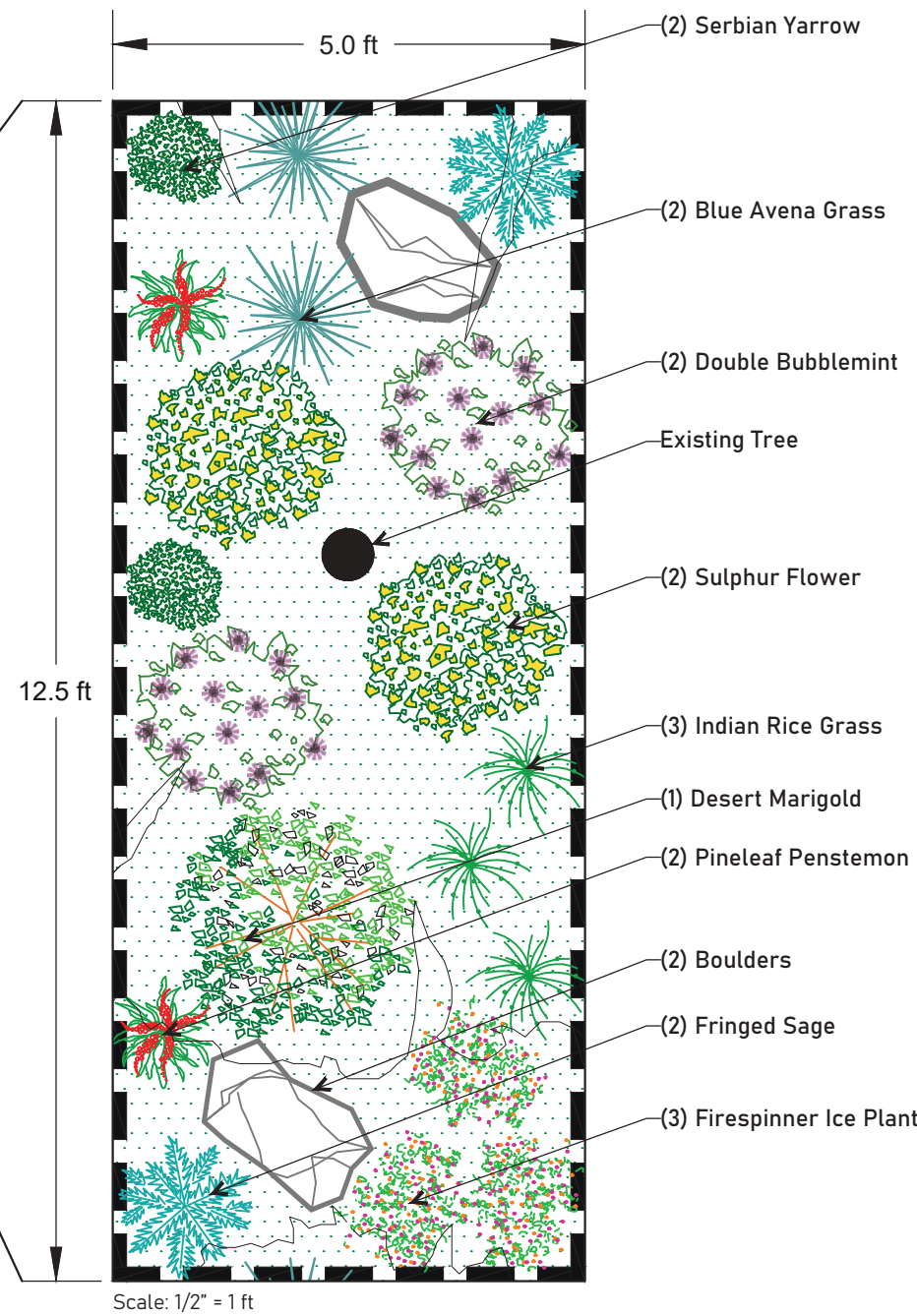
Note: Example rendering shows plants at mature size and spread, which is typically achieved 3-5 years after planting.



# High Plains Desert


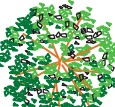


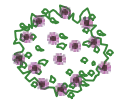



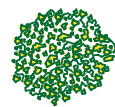


Scale: 1/8" = 1 ft



Scale: 1/2" = 1 ft

## PLANT LEGEND

-  Blue Avena Grass
-  Desert Marigold
-  Firespinner Ice Plant
-  Fringed Sage
-  Double Bubblemint
-  Indian Rice Grass
-  Pineleaf Penstemon
-  Serbian Yarrow
-  Sulphur Flower

- Taking a cue from the locale and the environment immediately around us, this design celebrates native plants.
- Leaning heavily into warm colors such as bright yellow, deep orange and pink.
- The first plants will flower in the spring, followed by some heat lovers in high-summer, while others will put on a show in the fall.
- A fully xeric plant palette, there won't be much need for irrigation beyond the establishment period or during periods of prolonged heat.

# High Plains Desert

Full Sun

Common Name	Scientific Name	Water Demand	Exposure	Install Size	Mature Size (Height x Spread)	Bloom Color	Bloom Time	Native
Blue Avena Grass	<i>Helictotrichon sempervirens</i>	Low	Full Sun	#1	36"x18"	Buff	Late Spring	
Desert Marigold	<i>Baileya multiradiata</i>	Low	Full Sun	#1	18"x30"	Yellow	Late Spring to Early Fall	
Firespinner Ice Plant	<i>Delosperma 'Fire Spinner'</i>	Low	Full Sun	#1	12"x18"	Orange/Purple	Late Spring to Late Summer	
Fringed Sage	<i>Artemisia frigida</i>	Very Low	Full Sun	#1	12"x18"	Yellow	Late Summer	•
Double Bubblemint	<i>Agastache cana</i>	Low	Full Sun	#1	30"x24"	Rich Pink	Mid Summer to Fall	•
Indian Rice Grass	<i>Achnatherum hymenoides</i>	Low	Full Sun	#1	15"x15"	Tan	Mid Summer	•
Pineleaf Penstemon	<i>Penstemon pinifolius</i>	Low	Full Sun	#1	9"x12"	Scarlet	Mid Summer	•
Serbian Yarrow	<i>Achillea serbica</i>	Low	Full Sun	#1	9"x12"	White	Late Spring to Early Summer	
Sulphur Flower	<i>Eriogonum umbellatum</i>	Very Low	Full Sun	4" Pot	12"x24"	Yellow	Summer to Early Fall	•



High Plains Desert

Full Sun



DESERT MARIGOLD



BLUE AVENA GRASS



PINELEAF PENSTEMON



INDIAN RICE GRASS



FIRESPINNER ICE PLANT



SERBIAN YARROW



FRINGED SAGE



SULPHUR FLOWER



HUMMINGBIRD MINT



# Illustrative Garden Rendering

## Example Garden: Cool Breeze



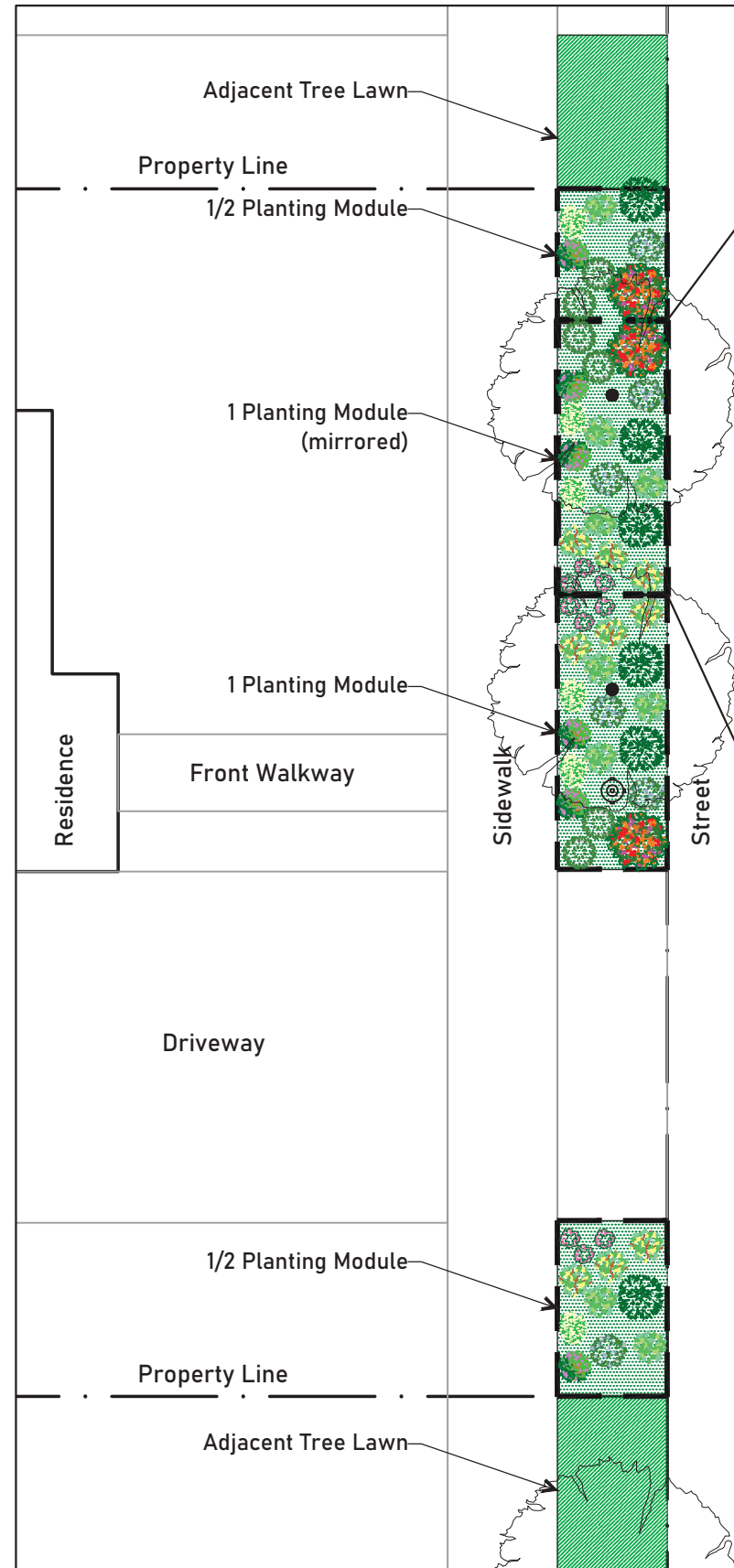
Note: Example rendering shows plants at mature size and spread, which is typically achieved 3-5 years after planting.



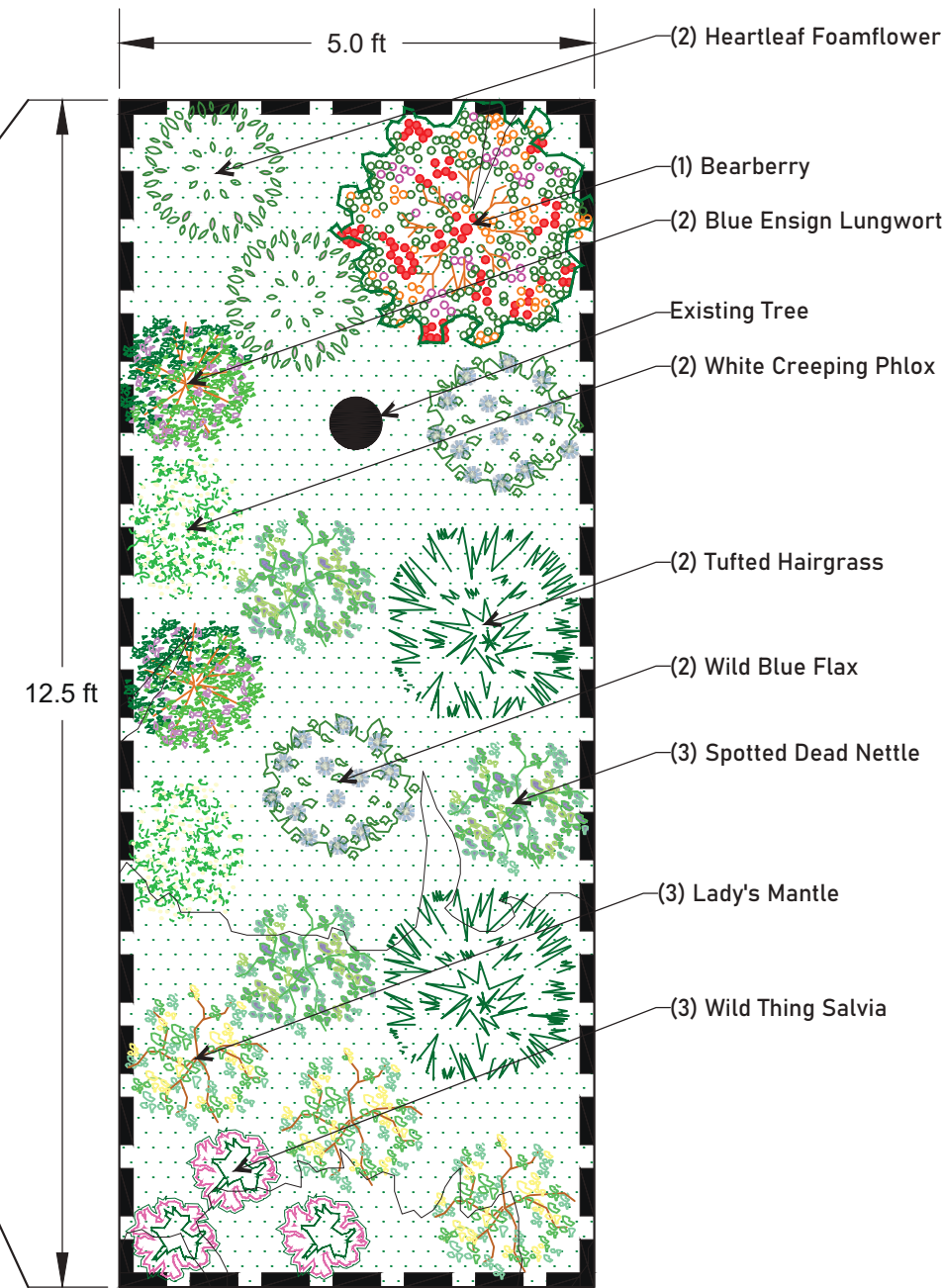
# Cool Breeze

# Cool Breeze

Part Shade



Scale: 1/8" = 1 ft



Scale: 1/2" = 1 ft

## PLANT LEGEND

- Bearberry
- Blue Ensign Lungwort
- Heartleaf Foamflower
- Lady's Mantle
- Spotted Dead Nettle
- Tufted Hairgrass
- White Creeping Phlox
- Wild Blue Flax
- Wild Thing Salvia

- Ideal for north, northwest and northeast exposures, this part shade design utilizes plants with lots of foliage.
- Native plants mixed with those adapted to the Front Range climate in subdued, cool colors that come in a variety of white and blue tones.
- Another landscape that will provide flower interest from spring all the way to fall.
- Slightly more water will be needed, due to the nature of these plants' ideal growing conditions.

Common Name	Scientific Name	Water Demand	Exposure	Install Size	Mature Size (Height x Spread)	Bloom Color	Bloom Time	Native
Bearberry	<i>Arctostaphylos uva-ursi</i>	Low	Part Shade	#1	6"x36"	Soft Pink	Early Spring	•
Blue Ensign Lungwort	<i>Pulmonaria 'Blue Ensign'</i>	Low-Med	Part Shade	#1	12"x18"	Blue	Spring	
Heartleaf Foamflower	<i>Tiarella cordifolia</i>	Low-Med	Part Shade	#1	12"x18"	White/Pink	Late Spring to Late Summer	
Lady's Mantle	<i>Alchemilla mollis 'Thriller'</i>	Low	Part Shade	#1	18"x18"	Yellow	Spring to Summer	
Spotted Dead Nettle	<i>Lamium maculatum 'Purple Dragon'</i>	Low-Med	Part Shade	#1	6"x18"	Purple	Late Spring to Late Summer	
Tufted Hairgrass	<i>Deschampsia cespitosa</i>	Low-Med	Part Shade	#1	30"x24"	Shiny Black	Mid Summer	•
White Creeping Phlox	<i>Phlox subulata 'White Delight'</i>	Low	Part Shade	4" Pot	6"x15"	White	Early Spring	
Wild Blue Flax	<i>Linum lewisii</i>	Low	Part Shade	#1	18"x15"	Blue	Late Spring to Early Summer	•
Wild Thing Salvia	<i>Salvia greggii 'Wild Thing'</i>	Low	Part Shade	#1	18"x12"	Pink	Summer to Fall	•



Cool Breeze

Part Shade



WHITE CREEPING PHLOX



HEARTLEAF FOAMFLOWER



LADY'S MANTLE



WILD BLUE FLAX



BEARBERRY (KINNIKINNICK)



BLUE ENSIGN PULMONARIA



WILD THING SALVIA



PURPLE DRAGON DEAD NETTLE



TUFTED HAIRGRASS



# Illustrative Garden Rendering

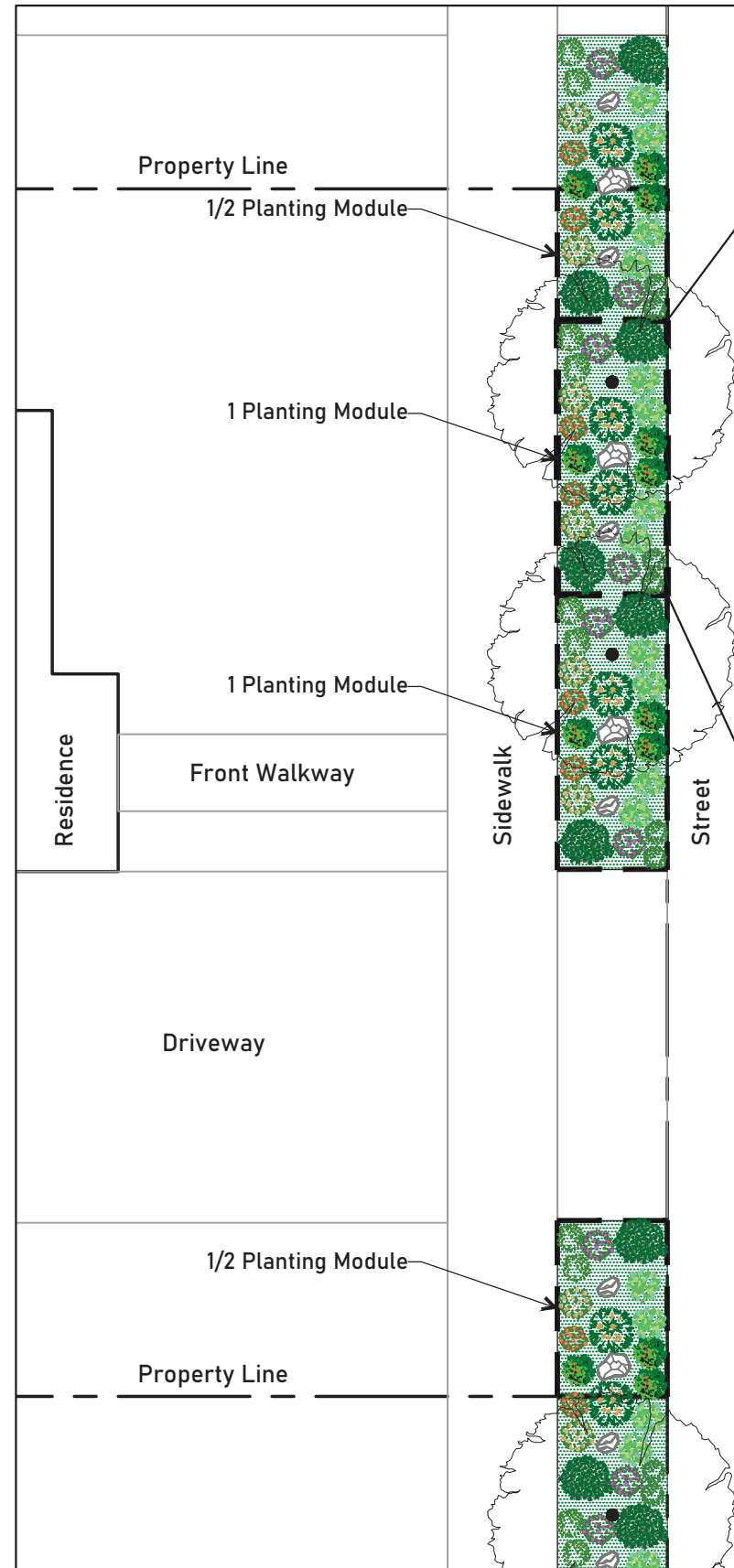
## Example Garden: Summer Shade



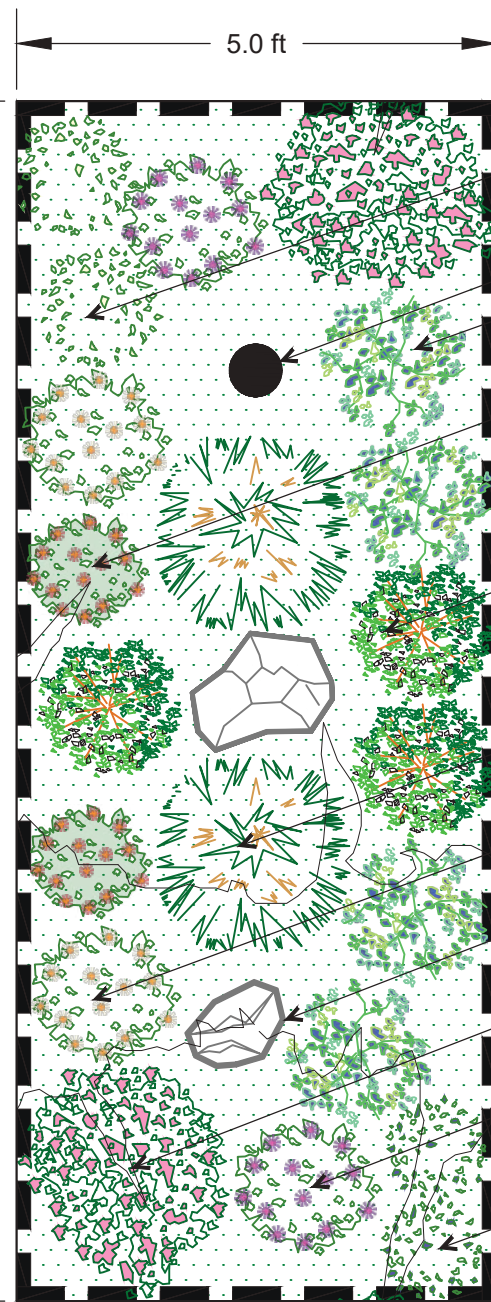
Note: Example rendering shows plants at mature size and spread, which is typically achieved 3-5 years after planting.



# Summer Shade



Scale: 1/8" = 1 ft



Scale: 1/2" = 1 ft

## PLANT LEGEND

- Blazing Sunset Red Avens
- Bugleweed
- Cushion Spurge
- Fall Blooming Reed Grass
- False Forget-Me-Not
- Petite Delight Bee Balm
- Pink Whirling Butterflies
- White Cloud Coral Bells
- White Nancy Nettle

# Summer Shade

## Part Shade

- Part shade, especially during the hours of peak sunshine will make this water wise design thrive.
- Range of bloom colors spanning from cool to warm will ensure there is always something that catches the eye.
- Staggered flowering times provide interest throughout the seasons.
- Despite using the most water of the designs in this package, only a fraction of what a green lawn requires will be needed to keep this garden lush and thriving.

Common Name	Scientific Name	Water Demand	Exposure	Install Size	Mature Size (Height x Spread)	Bloom Color	Bloom Time	Native
Blazing Sunset Red Avens	<i>Geum flora plena 'Blazing Sunset'</i>	Low	Part Shade	#1	24"x15"	Red	Late Spring to Mid Summer	
Bugleweed	<i>Ajuga reptans</i>	Low-Med	Part Shade	4" Pot	6"x12"	Blue	Late Spring to Early Summer	
Cushion Spurge	<i>Euphorbia polychroma</i>	Low	Part Shade	#1	18"x18"	Yellow	Spring to Early Summer	
Fall Blooming Reed Grass	<i>Calamagrostis brachytricha</i>	Low-Med	Part Shade	#1	36"x24"	Pinkish-Tan	Late Summer	
False Forget-Me-Not	<i>Brunnera macrophylla</i>	Low	Part Shade	#1	15"x18"	Blue	Late Spring to Early Summer	
Petite Delight Bee Balm	<i>Monarda 'Petite Delight'</i>	Low-Med	Part Shade	#1	12"x18"	Lavender-Pink	Mid Summer to Early Fall	
Pink Whirling Butterflies	<i>Gaura lindheimeri 'Pink Cloud'</i>	Low	Part Shade	#1	30"x30"	Pink	Mid Summer to Fall	
White Cloud Coral Bells	<i>Heuchera sanguinea 'White Cloud'</i>	Low-Med	Part Shade	#1	18"x18"	White	Summer	
White Nancy Nettle	<i>Lamium maculatum 'White Nancy'</i>	Low-Med	Part Shade	#1	9"x15"	White	Late Spring to Summer	



Summer Shade

Part Shade



BLAZING SUNSET RED AVENS



WHITE CLOUD CORAL BELLS



FALSE FORGET-ME-NOT



BUGLEWEED



CUSHION SPURGE



FALL BLOOMING REED GRASS



PETITE DELIGHT BEE BALM



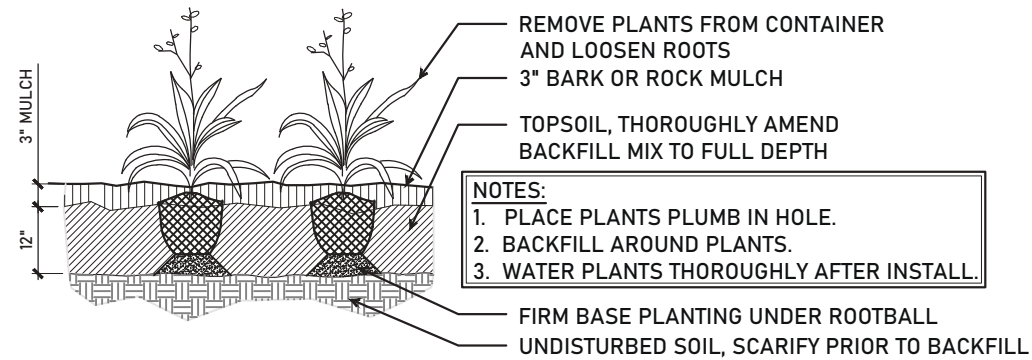
WHITE NANCY NETTLE



PINK WHIRLING BUTTERFLIES

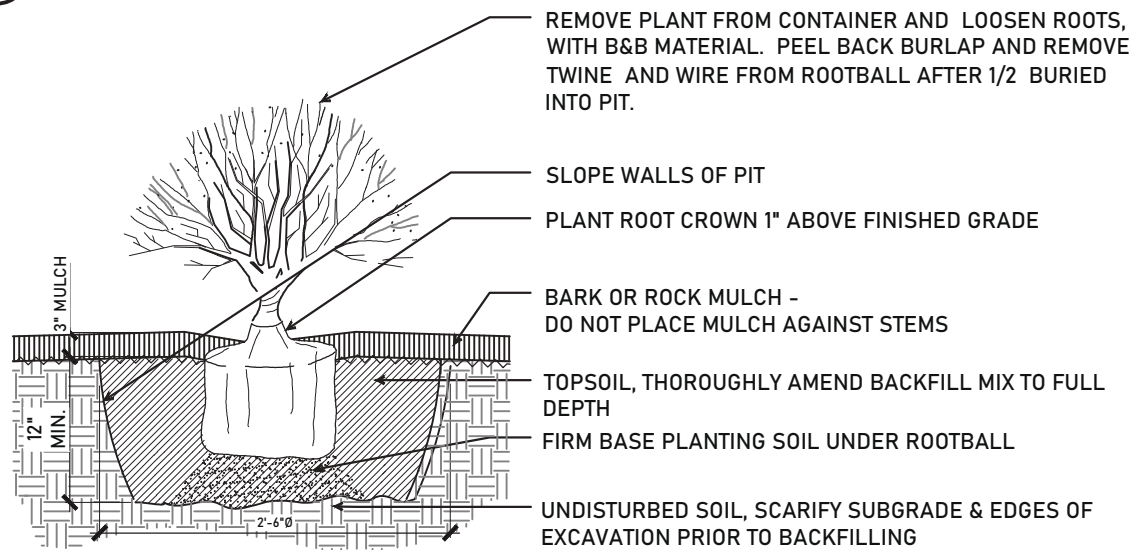


# Planting Specifications



## 1 GROUNDCOVER, GRASSES & PERENNIALS

NOT TO SCALE



## 2 SHRUB PLANTING

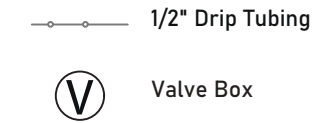
NOT TO SCALE

### PLANTING NOTES

- Protect existing trees.
- Planting is subject to weather and plant availability.
- Planting window for shrubs, perennials, grasses & groundcovers is generally between May 15 and October 15, weather pending.
- See above planting details for installation.
- Plants have increased watering needs during establishment period (1-3 growing seasons).

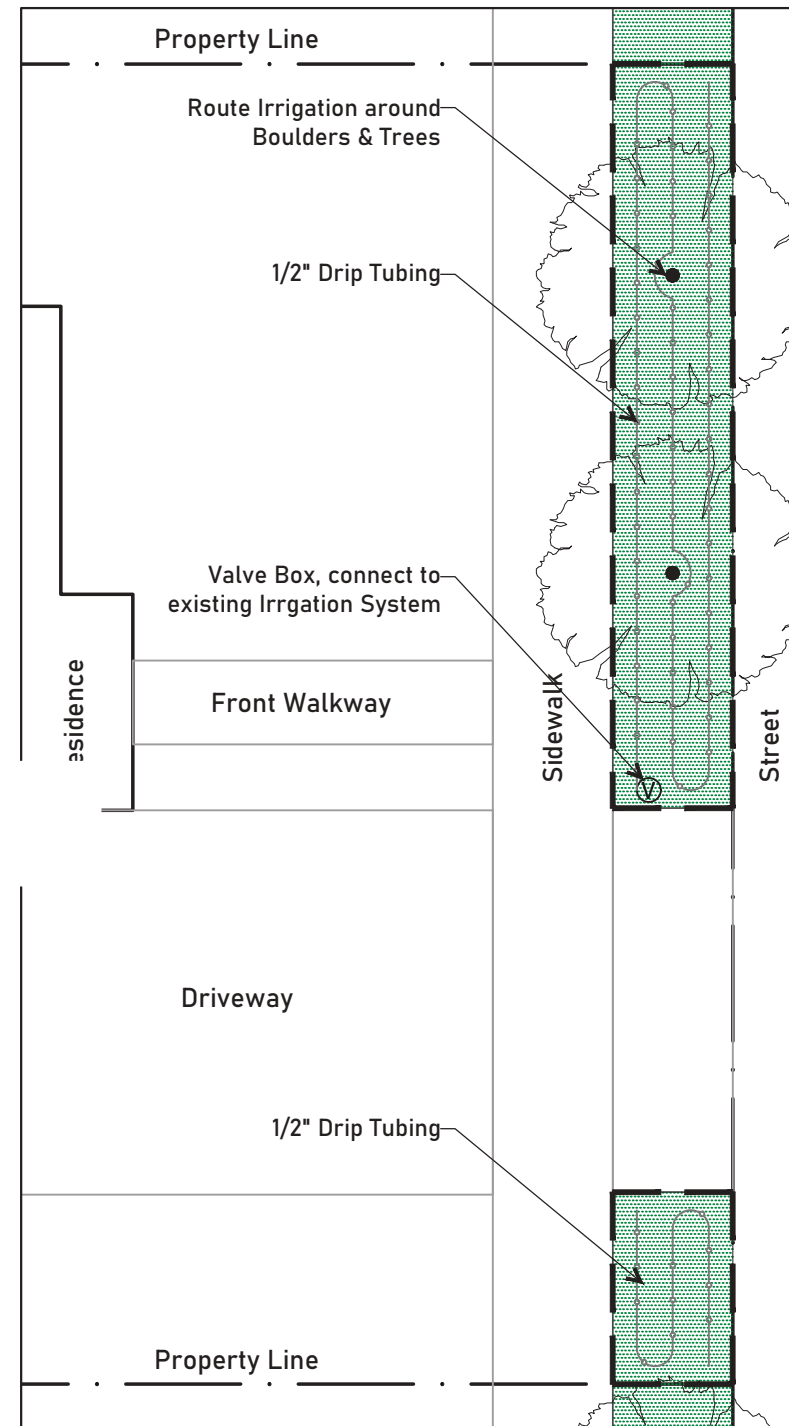
# Irrigation Diagram

### IRRIGATION LEGEND



### IRRIGATION NOTES

- Call before you dig 811.
- Soaker line drip tubing to be 1/2" diameter, brown or black polyethylene (PE), 12" emitter spacing, 1 gallon per hour (GPH).
- Alternatively, emitter drip tubing to be 1" mainline, with 1/2 GPH pressure compensating emitters.
- Drip tubing lines to be spaced 18" apart.
- Route tubing around obstacles: trees, boulders, fire hydrant, street signs, etc.
- Separate drip zone from lawn (spray) irrigation.
- Only modify zones within existing irrigation system and controller.
- Use 10" round valve box, green cover to house drip valve.
- Contractor or homeowner to verify pressure of irrigation system prior to drip line installation.





# Material Specifications

## WOOD MULCH

Natural colored wood mulch helps increase water infiltration, retain soil moisture reduces evaporation, and offers a protective layer against temperature extremes. To prevent mulch from washing out of the tree lawn and into storm drains wood mulch may **only** be used as a 4-6 inch ring around plants and not within 2 feet of the property line. The grade at that point should not be altered.

### Cascade Cedar Mulch

- hair-like fibers weave together helping the mulch stay in place
- maintains color
- install as 3" layer over top soil



CASCADE CEDAR MULCH

### Small/Medium Pine Bark Mulch

- helps prevent soil erosion
- small .75-1.5" or medium 1-3" sizes approved
- not recommended for areas with high winds
- install as 3" layer over top soil



SMALL/MEDIUM PINE BARK MULCH

### Redwood Mulch

- mats together through its fibrous structure
- decorative, color fades slowly
- install as 3" layer over top soil



REDWOOD MICROHAIR MULCH

## ROCK MULCH

Colored rock mulches provide options when rock is aesthetically desired over wood mulch, or in areas with slopes, heavy drainage flows, or high winds. Ensure to use rock where there is concentrated water flow such as property lines. Do not alter the land grade.

The approved types of rock represent locally available material while building upon the existing color palette of the Sierra Ridge neighborhoods.

You may choose from the below palette OR rocks with similar coloration and size to your existing front yard landscaping rock.

### Local River Rock

- round granite or gneiss river rock
- tan colored
- approved size 1-2"
- install as 3" layer over top soil



LOCAL RIVER ROCK MULCH 1-2"

### Grey Granite Rock

- angular granite chips
- grey colored
- approved size 1/2-2"
- install as 3" layer over top soil



GREY GRANITE ROCK MULCH 1/2-2"

### Colorado Red Rock

- angular sandstone chips
- red colored
- approved size 1/2-2"
- install as 3" layer over top soil



COLORADO RED ROCK MULCH 1/2-2"



# Material Specifications

## BOULDERS

Locally or regionally sourced and readily available boulder options allow for integration to enhance the curbside landscape throughout the seasons.

Boulders shall not exceed 30" in height, must be in compliance with all applicable local and county code regarding sight-triangles (at least 6 feet from the corner), and must not block any emergency infrastructure such as fire hydrants, etc. Boulders need to be a minimum of 24" from the face of the curb.

### Grey Granite Boulder

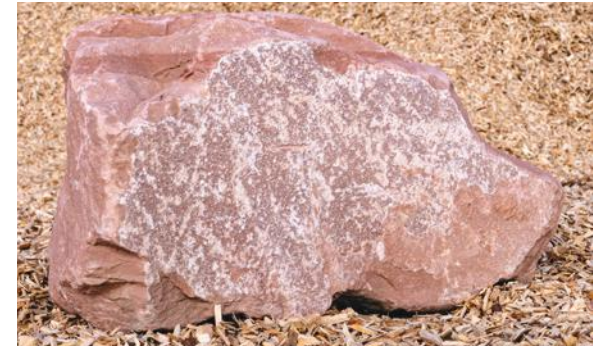
- quarried in Clear Creek County, CO
- crisp edges
- grey granite with black and white marbling
- bury at 1/3 of rock at a minimum



GREY GRANITE BOULDER

### Colorado Red Sandstone Boulder

- quarried in Boulder County, CO
- crisp edges
- red with white and tan marbling
- bury at 1/3 of rock at a minimum



COLORADO RED SANDSTONE BOULDER

### Colorado Buff Sandstone Boulder

- quarried in Larimer County, CO
- crisp edges
- boulders contain a mix of grey, cream, tan and gold colors
- bury at 1/3 of rock at a minimum



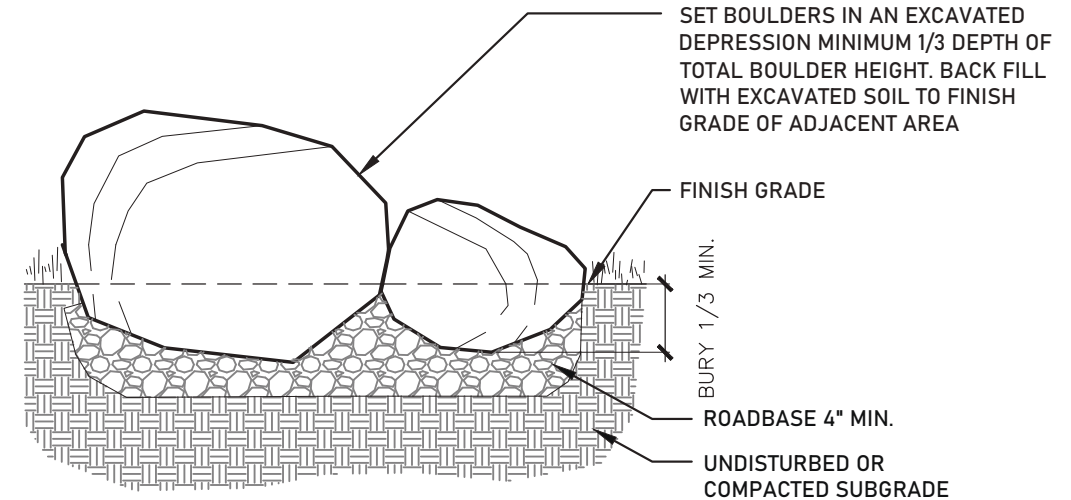
COLORADO BUFF SANDSTONE BOULDER

### Moss Granite Boulder

- harvested in Carbon County, WY
- round edges
- orange with lichen and small moss on surface
- bury at 1/3 of rock at a minimum



MOSS GRANITE BOULDER



- NOTES:**
1. BOULDERS SHALL NOT EXCEED 30" IN HEIGHT.
  2. MAINTAIN 5 FT DISTANCE FROM DRIVEWAY EDGE.
  3. BOULDERS SHALL NOT BE LOCATED WITHIN 10 FT OF A HYDRANT.

**3 BOULDER**  
NOT TO SCALE



# Material Specifications

## LANDSCAPE EDGING

Metal edging provides a durable, cost effective way to permanently separate different ground covers / landscape materials, helping reduce maintenance needs.

Powder-coated edging is available in various colors, ensuring a perfect match with the surrounding color palette.

### Galvanized Rolled-top Steel Edging

- rolled top adds rigidity
- silvery-grey color
- cost effective
- install per manufacturer specifications



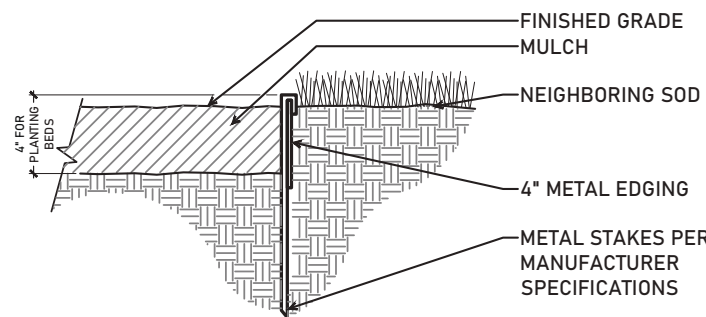
GALVANIZED ROLLED-TOP STEEL EDGING

### Powder Coated Steel Edging

- interlocking for additional stability
- green, black or brown colors approved
- more durable than rolled-top edging
- install per manufacturer specifications



POWDER COATED STEEL EDGING



## 4 LANDSCAPE EDGING

NOT TO SCALE

## Disclaimer

This document and plans within have been prepared as an illustrative guideline, and do not reflect the accurate or complete location of utilities, hydrants, or existing trees. Locate all utilities prior to beginning work.

Homeowner must adhere to all applicable code.

All landscape improvements must be submitted and approved by the District's Architectural Review Committee prior to installation.





Sierra Ridge Metropolitan District  
Douglas County, Colorado, United States



Elena Arnosky  
2741 14th St, Apt B  
Boulder, CO 80304  
T: 512.913.5365  
E: [studio@leafdesignworks.com](mailto:studio@leafdesignworks.com)  
W: [leafdesignworks.com](http://leafdesignworks.com)